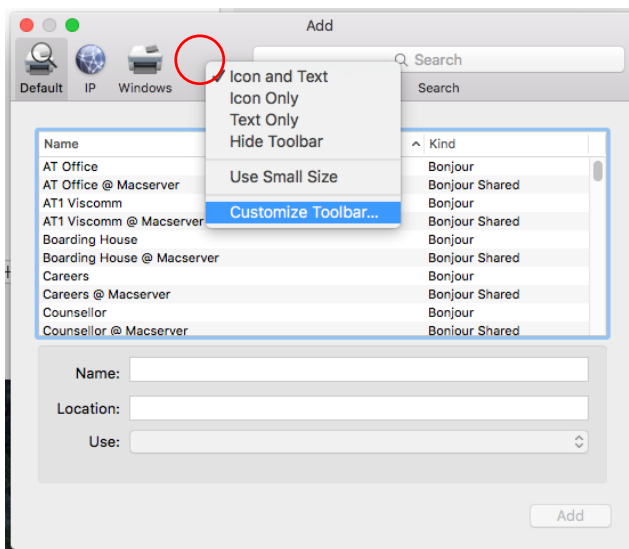


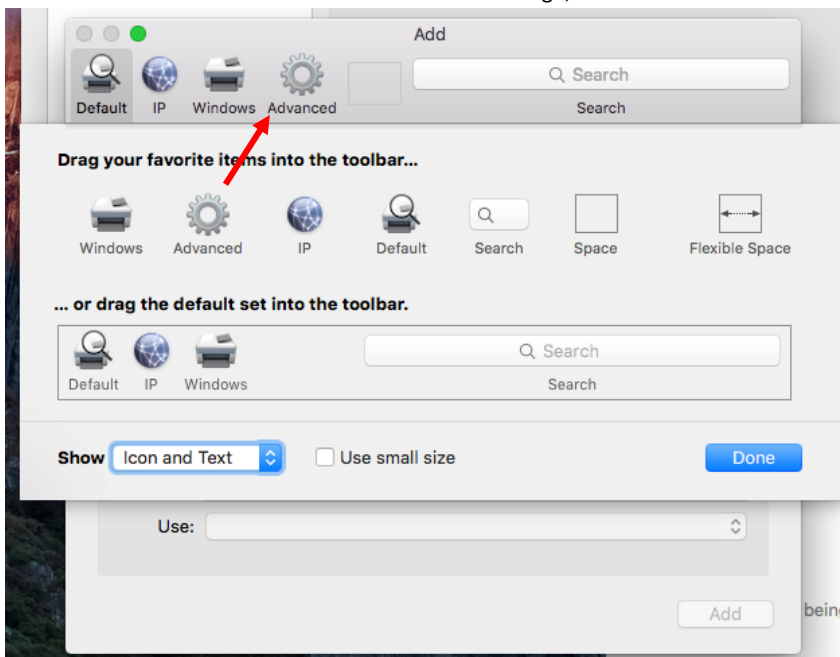


Mac Printing 2016

- 1) Download the FujiXerox printer software from Moodle by clicking [here](#).
- 2) Install the driver by running it from your Downloads folder. If it will not open and you see a security prompt, hold down the CTRL key on your keyboard and try opening the file again, then confirm you wish to run it
- 3) Open your MacBook's 'Settings' app, then select 'Printers'
- 4) Select the small + icon at the bottom left to add a new printer
- 5) Right/secondary click on the space just to the right of the 'Windows' button and select 'Customize Toolbar'

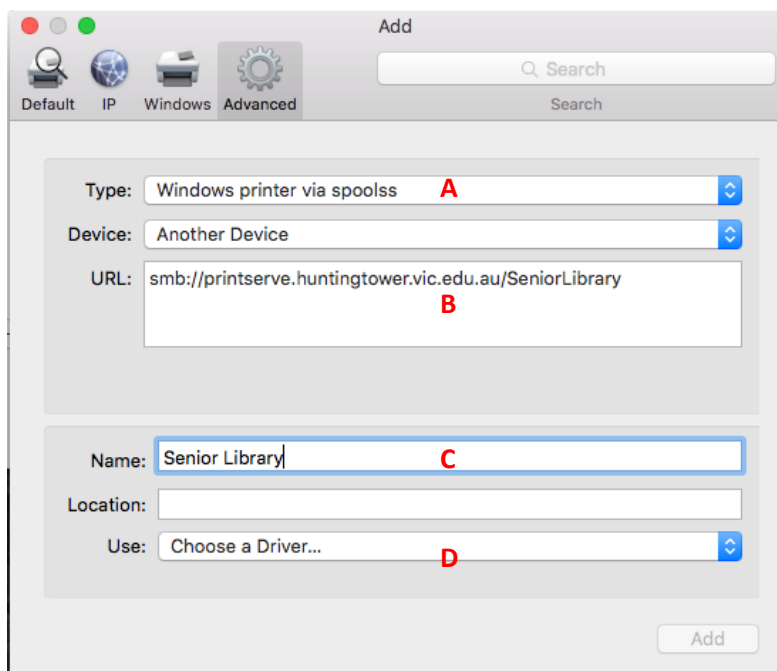


- 6) Drag the 'Advanced' button next to the 'Windows' button and let go, then Done





- 7) Click the new 'Advanced' button
- 8) Enter the following settings:
 - a. Change the Type: to 'Windows Printer via Spoolss'
 - b. For the printer address, enter the following – replace 'SeniorLibrary' with the name of the printer you need from the list at the end of this document
smb://printserve.huntingtower.vic.edu.au/SeniorLibrary
 - c. For the printer name, enter what you would like it to be called, e.g. Senior Library



- d. For the driver, select 'Choose Software', then in the window the pops up use the search function to find the driver to match the printer, listed at the end of this document – when you have selected the driver click ok
 - e. If you are shown some optional settings for the printer simply leave them as is and click ok again
- 9) Now print a file – the first time you print you will be asked to enter a username and password. This is your school username and password, not your Mac one. Enter your username with Huntingtower\ in front of it as in the screenshot, then enter the password, tick to remember the password and then click OK.





Printer Address and Driver List

Remember: Do not print to a printer unless you are in that class room! If you are not, use the Senior Library!

Printer Name	Driver Name
AT1Viscomm	FX DocuPrint C3055 DX v3015.103 PS
AT5Art	FX DocuPrint C3055 DX v3015.103 PS
BoardingHouse	FX DocuPrint C2120 PS v4.1
Media (For Media Students Only)	FX DocuPrint C3055 DX v3015.103 PS
SC2DesignTech	FX DocuPrint C3055 DX v3015.103 PS
SeniorLibrary	FX ApeosPort-IV C2270 v3017.104 PS
SM4	FX DocuPrint C2100 3.5
SM8	FX DocuPrint CM305 df v3018.102 PS